

MG GREECE

PRESENTATION

Palaio Faliro

THE PROPERTY

Renovated Apartment

Description

23.7m²

Floor: Lower Ground Floor

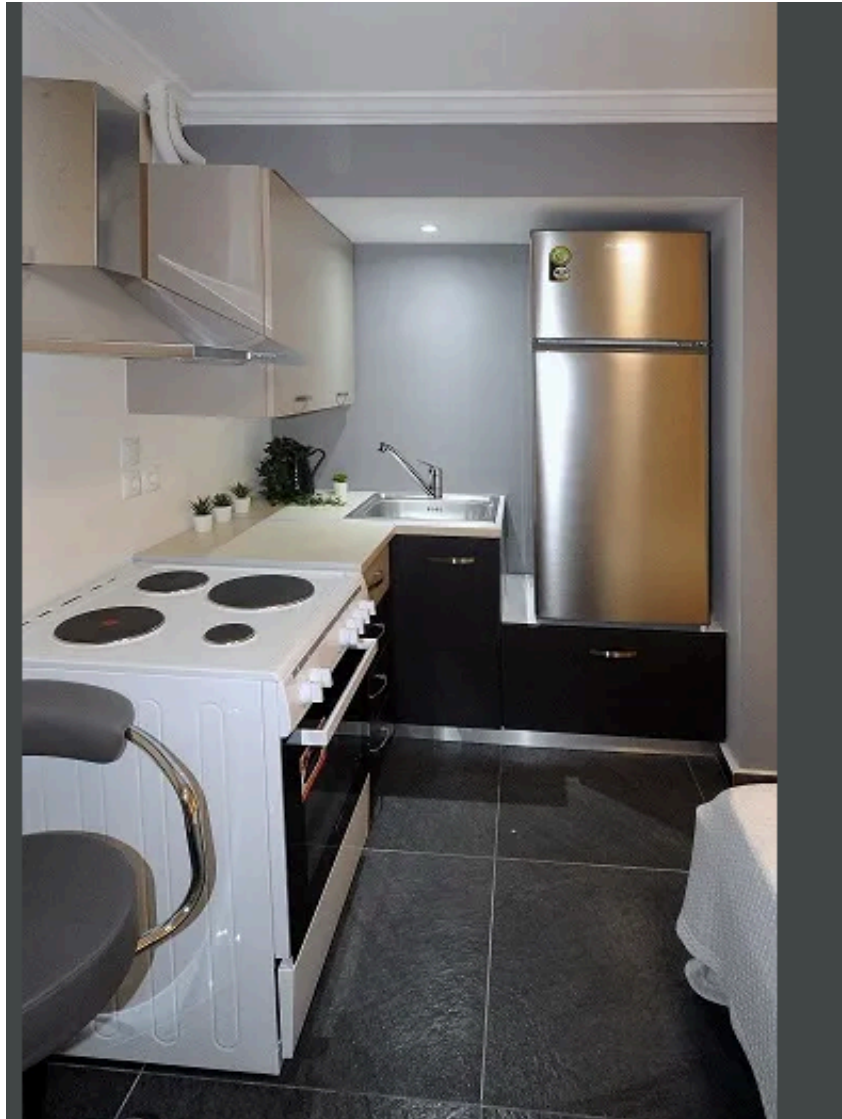
Price: 65.000€

Price per m²: 2.742€

THE APARTMENT



THE APARTMENT



THE APARTMENT

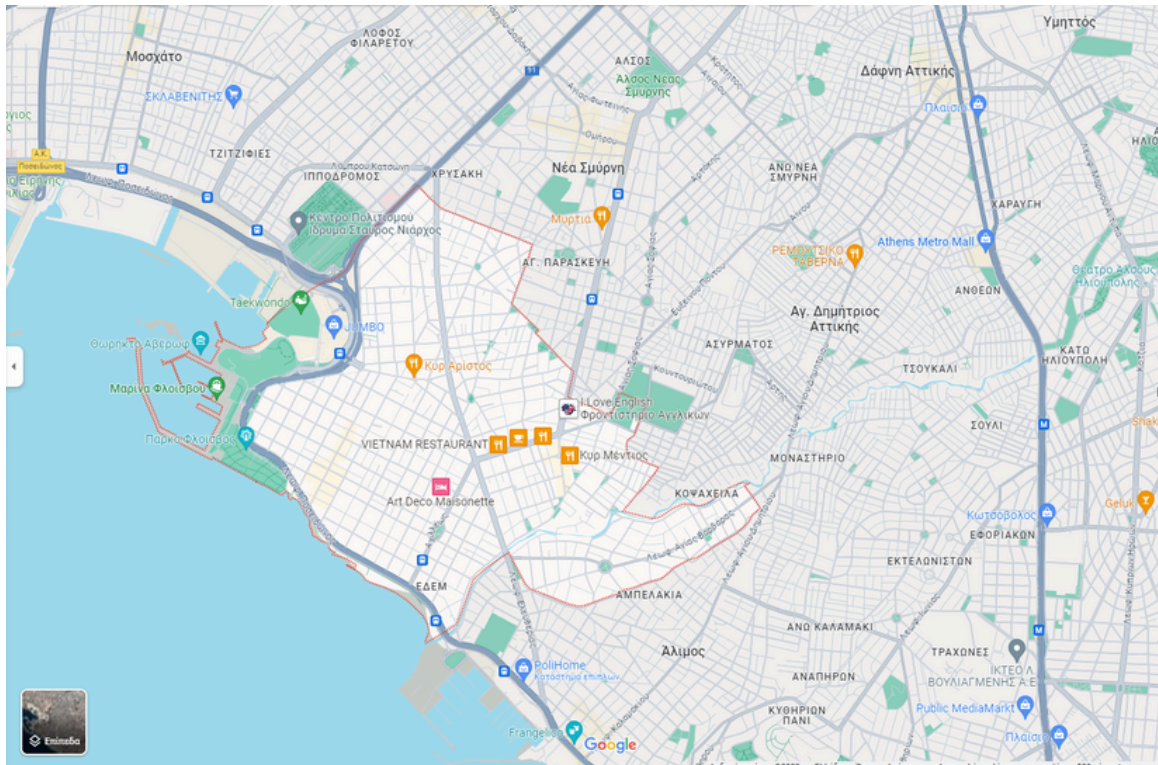


STRATEGIC LOCATION

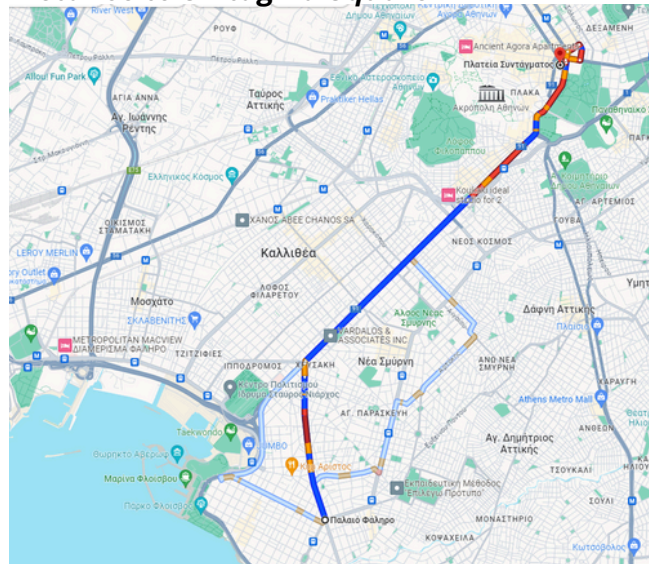
Palaio Faliro a coastal district and a municipality in the southern part of Athens.

The gateway to the Athens Riviera and an easy jump off point for Piraeus and the city centre. Flisvos Marina, while its beach and waterfront promenade are a quick and scenic escape from urban life. Stavros Niarchos Foundation Cultural Centre helped connect the dots and bring more dash to the area.

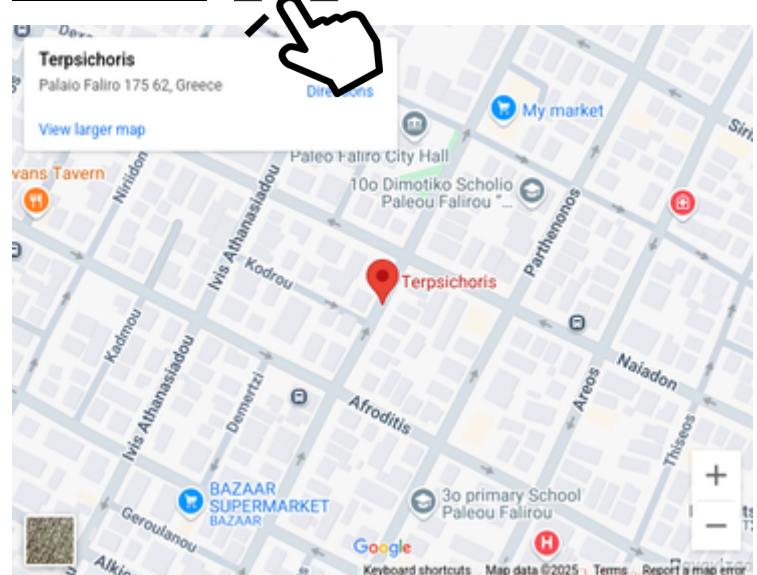
Palaio Faliro



Distance to Sintagma Square

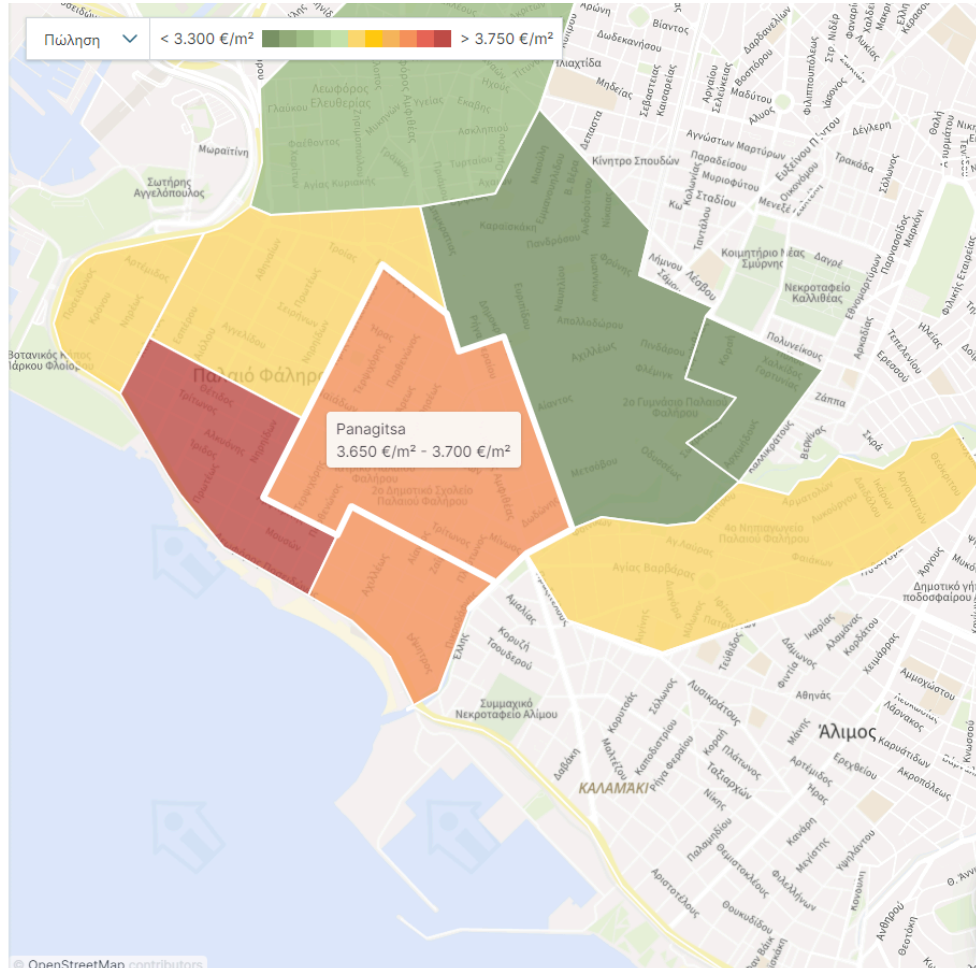


Location Link



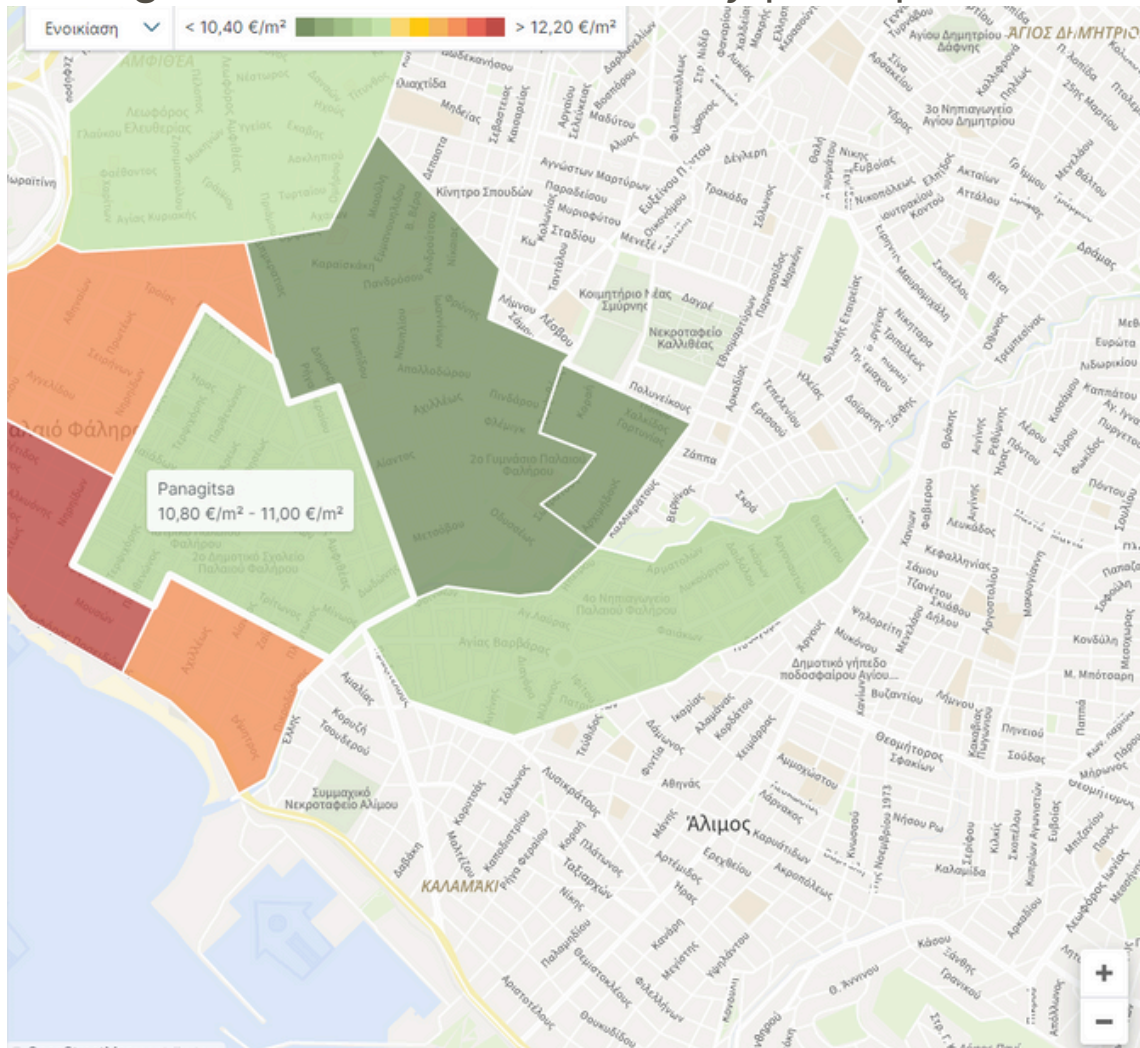
SALES MARKET DATA

In August 2023 for residential properties for sale an average of €3,590 per square meter, with an increase of 18.13% compared to August 2022 (3,039 €/m²).



RENTING MARKET DATA

In August 2023 for residential rental properties was asked an average of € 11.72 per month per square meter, with an increase of 11.30% compared to August 2022 (€ 10.53 monthly per square meter).



*Source: Indomio



ABOUT US



MG Greece is a privately owned registered company in Greece that has been active **since 1996**, in the last decade the company has been operating in the local real estate market mainly in Athens.

MG Greece locates properties and potential investments for its clients, **inspects**, **renovates** and **manages** the properties on behalf of them, when the basis of the relationship between the parties is for long-term rent apartments.

The company owns **profitable** properties in central areas in the metropolis of Athens.

DISCLAIMER

The information contained in this document is not inclusive and does not claim to contain all of the information which investors may need or desire in order to make a conclusive investment decision.

Past performance is not a guarantee of future results.

All data as of 14/09/2023, unless otherwise noted.

